

## ACCELERATING THE PRACTICE TRANSFORMATION

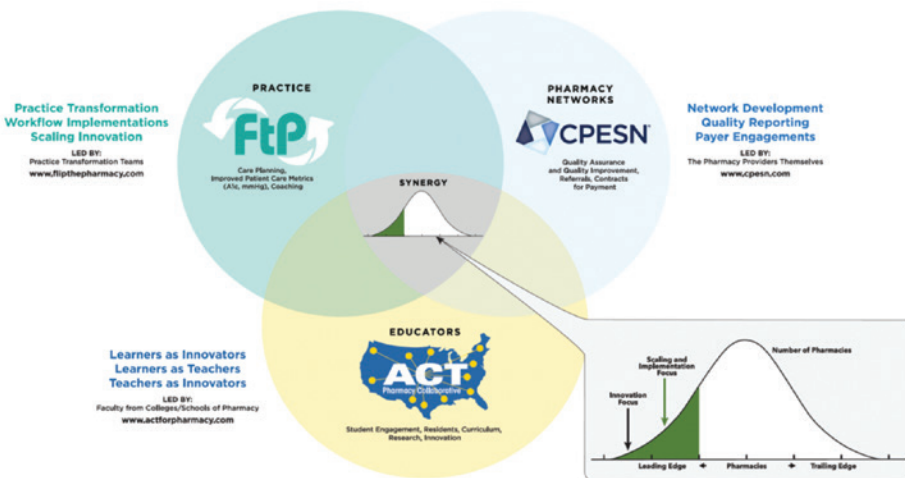
Pharmacy teams at CPESN<sup>®</sup> USA network pharmacies understand the need for community pharmacy practice transformation and know there needs to be visible, coordinated efforts to make transformation real in communities nationwide.

**CPESN USA** and the pharmacy providers that lead it are building pharmacy networks and doubling down on payer engagements, with active payer or partner programs in 19 networks.

**Flip the Pharmacy** is a Community Pharmacy Foundation-supported initiative to bring coaches and resources directly to CPESN pharmacies to accelerate change. **Flip the Pharmacy is transforming community-based pharmacies away from filling prescriptions at a moment in time to caring for patients over time**, with a focus on workflow implementations and scaling innovation. More than 500 community-based pharmacies are engaged to-date, and the program **aims to transform more than 5,000 pharmacies** across the United States by the end of the five-year initiative. (See page 28 of this month's *America's Pharmacist*<sup>®</sup> issue for more coverage of the Flip the Pharmacy initiative.)

The **ACT (Academia-CPESN Transformation) Pharmacy Collaborative** is a national collaborative bringing together faculty from colleges/schools of pharmacy with CPESN pharmacies and leaders to unite, mobilize, and amplify community pharmacy transformation efforts.

This collaborative is supported by CPF, CPESN USA, and the American Association of Colleges of Pharmacy, and is led by a team from the University of Pittsburgh. **More than 80 colleges/schools** of pharmacy have joined to date, with each dean stating their school's commitment to community pharmacy practice transformation. **ACT teams at these schools are ready and willing to support practice transformation** — through engaging learners, reimagining curricula, encouraging innovation, and expanding community-based pharmacy research.



The moment is NOW. The momentum is REAL. Together CPESN USA, Flip the Pharmacy, and the ACT Pharmacy Collaborative are working daily to scale community pharmacy care delivery across the country! Together, we can accomplish more than we could alone.

Join us, and visit [flipthepharmacy.com](http://flipthepharmacy.com) and [actforpharmacy.com](http://actforpharmacy.com) to learn more. ■

**CPESN USA is a clinically integrated nationwide organization of pharmacy networks developed to advance community-based pharmacy practice in America. Through clinical integration, pharmacies in CPESN networks can engage with each other to improve the quality of care provided to patients and the value offered to medical-side payers (bypassing PBMs) through enhanced services and lower costs.**